

ADVANCING

Montana Technological University



TUESDAY, OCTOBER 22, 2024 | COPPER LOUNGE | 3:00-4:00 PM

↑ MAUD S CANYON TR NO 815
↑ JCT. BN RAILROAD 1½
↑ MAUD S CANYON TRAILHEAD 2

TODAY'S AGENDA



Mission,
Vision, Goals



Institutional
Priorities



Enrollment



Finance &
Budget



Master
Planning
Process



Career
Services



Celebrating
Success



Looking
Ahead



Campus
Searches

MISSION:

As Montana's Special Focus Institution, Montana Technological University provides a transformative student experience by developing leaders and advancing science, engineering, and technology, with the purpose of benefiting humanity while meeting the changing needs of society.

VISION:

To be the institute of opportunity and innovation.

MONTANA
TECHNOLOGICAL UNIVERSITY

OUR GOALS



Student Success



**Programs of
Distinction**



**A Healthy and Vibrant
Campus Ecosystem**



2024-25 INSTITUTIONAL PRIORITIES

- Accreditation response/planning for the future
- Finalize institutional KPI's
- Brand messaging alignment with strategic plan
- DPA micro-credential program established
- Development of Tech Hub test bed
- Heating plant project completed
- Phase I LRBP plan - defined programmatic pieces for Main & Engineering Halls
- Comprehensive master plan
- Feasibility study/campaign planning
- 125-year celebration planning
- Highlands College Dean search
- Chancellor search



FALL 2024 ENROLLMENT UPDATE

OVERALL ENROLLMENT

	Fall 2019	Fall 2020	Fall 2021	Fall 2022	Fall 2023	Fall 2024
Total Headcount	2,421	2,329	2,339	2,280	2,321	2,429
Undergraduate	2,200	2,110	2,130	2,092	2,134	2,224
Graduate	221	219	209	188	187	205
Gender						
Female	41%	41%	42%	40%	39%	41%
Male	59%	59%	58%	60%	61%	58%
Origin Address						
International	5%	4%	3%	2%	2%	2%
Montana	77%	80%	79%	79%	79%	79%
Other U.S. States	17%	17%	18%	19%	19%	19%
Residence Hall Students	315	323	361	416	436	465
New First Time + Transfers	531	488	530	510	528	613



UNDERGRADUATE ENROLLMENT

NORTH CAMPUS UNDERGRADUATE ENROLLMENT

	Fall 2019	Fall 2020	Fall 2021	Fall 2022	Fall 2023	Fall 2024
North Campus Undergraduate	1,493	1,431	1,474	1,437	1,435	1,497
Instate	1,153	1,148	1,191	1,151	1,136	1,182
Out of State	158	109	76	54	26	21
Western Undergraduate Exchange (WUE) & Advantage	182	174	207	232	273	294
New First Time	275	273	324	304	294	350
New Transfer	89	60	69	64	71	85
Retention	81%	79%	76%	81%	78%	

SOUTH CAMPUS UNDERGRADUATE ENROLLMENT

	Fall 2019	Fall 2020	Fall 2021	Fall 2022	Fall 2023	Fall 2024
Highlands College	707	679	656	655	699	727
Dual Credits	312	324	339	331	354	385
Traditional Students	395	355	317	324	345	342
Highlands (less Dual Credit)						
Instate	368	334	283	280	291	290
Out of State	23	16	12	13	8	4
Western Undergraduate Exchange (WUE) & Advantage	4	5	22	31	46	48
New First Time	136	133	108	119	145	154
New Transfers	31	22	29	23	18	24
Retention	65%	63%	67%	65%	61%	



GRADUATE ENROLLMENT

GRADUATE ENROLLMENT

	Fall 2018	Fall 2019	Fall 2020	Fall 2021	Fall 2022	Fall 2023	Fall 2024
North Campus Graduate	253	221	219	209	188	187	205
Instate	98	76	83	65	59	48	66
Instate Distance	9	7	7	10	7	7	14
Out of State	2	2	2	3	21	43	44
Out of State Distance	105	102	100	91	81	79	74
TARA	39	34	27	39	10	-	-
WRGP	-	-	-	1	10	10	7



FINANCE & BUDGET

125,158	110,000	95,054	124,500
125,487	150,000	101,090	125,000
124,000	35,000	101,684	154,000
1450		101,962	95,000
			154,200
			110,000
			89,000
			50,000
			10,700

CURRENT UNRESTRICTED REVENUE & METRICS

REVENUE	FY20	FY23	FY24	%Change		FY25	%Change
				1yr	5yr	Budgeted	1yr
State Support (base)*	\$15,639,208	\$15,654,173	\$16,789,008	7%	7%	\$17,952,744	7%
State Support (OTO)	\$82,155	\$1,258,211	\$77,930	-94%	-5%	\$564,710	625%
Net Tuition Revenue	\$12,727,415	\$10,826,004	\$11,221,547	4%	-12%	\$11,834,274	5%
Transfers/Other	\$772,937	\$1,070,821	\$1,026,870	-4%	33%	\$1,190,760	16%
Total Operating Revenue	\$29,221,715	\$28,809,209	\$29,115,354	1%	0%	\$31,542,488	8%
<small>*includes campus base + earned portion of PF</small>							
Student FTE	2,031	1,906	1,915	0%	-6%	1,915	0%
Resident Students	1,581	1,502	1,474	-2%	-7%	1,474	0%
Non-resident Students	450	404	441	9%	-2%	441	0%
Key Metrics							
State % Share	55.3%	61.0%	60.0%	-1%	5%	61.0%	1%
State Support per Res FTE	\$9,892	\$10,422	\$11,390	9%	15%	\$12,180	7%

- State % Share – budgeted for 61%, peer group median = 51%
- State \$\$ per Resident FTE = \$12,180, MUS FY25 average = \$11,819

CURRENT UNRESTRICTED EXPENDITURES & METRICS

EXPENDITURES	FY20	FY23	FY24	%Change		FY25	%Change
				1yr	5yr	Budgeted	1yr
Instruction	\$16,880,190	\$16,754,733	\$16,838,315	0%	0%	\$18,059,886	7%
Academic Support	\$1,785,845	\$1,652,047	\$1,960,414	19%	10%	\$2,220,511	13%
Student Services	\$3,714,417	\$3,922,499	\$3,996,653	2%	8%	\$4,344,183	9%
Institutional Support	\$2,378,926	\$2,259,249	\$2,162,458	-4%	-9%	\$2,498,502	16%
Operation & Maintenance	\$4,151,015	\$4,068,264	\$3,938,940	-3%	-5%	\$4,258,239	8%
Research	\$84,322	\$99,167	\$104,366	5%	24%	\$109,167	5%
Public Service	\$0	\$0	\$0	-	-	\$0	-
Scholarships	\$200,604	\$51,680	\$35,000	-32%	-83%	\$52,000	49%
Total CU Exp (net of waiver) →	\$29,195,319	\$28,807,639	\$29,036,146	1%	-1%	\$31,542,488	9%
Student FTE	2,031	1,906	1,915	0%	-6%	1,915	0%
Key Metrics							
% Instruction Exp	57.8%	58.2%	58.0%	0%	0%	57.3%	-1%
% Instruct/Acad/Stud Ser	76.7%	77.5%	78.5%	1%	2%	78.1%	0%
Expenditures per Student	\$14,375	\$15,114	\$15,162	0%	5%	\$16,471	9%

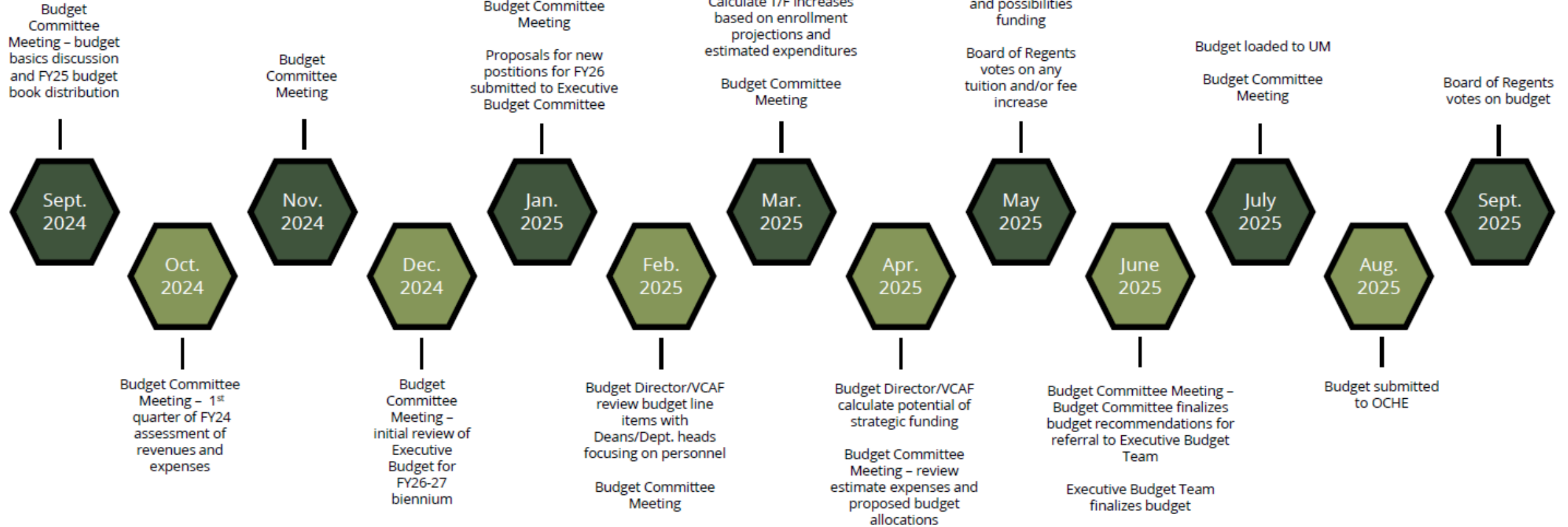
- **Instruction – comprises 57% of total expenditures BOR target = 50%**
- **% Instruction + Aca Support + Stud Service is 78% BOR target = 70%**

FISCAL YEAR 2025

Montana Tech
ALL FUNDS SUBJECT TO BOARD OF REGENTS APPROVAL
FISCAL YEAR 2025

Campus/Agency	Actual FY 2024	Budgeted FY 2025	Dollar Change Actual 2024 to Budgeted 2025	Percent Change Actual 2024 to Budgeted 2025
Montana Tech:				
Current Operating Unrestricted	\$ 29,036,146	\$ 31,542,488	\$ 2,506,342	9%
Current Restricted	23,667,227	27,516,273	3,849,046	16%
Current Designated	7,479,470	9,159,867	1,680,397	22%
Auxiliary Enterprises	6,142,978	6,577,523	434,545	7%
Loan & Endowment Funds	266,378	210,500	(55,878)	-21%
Plant Funds	7,610,009	9,581,619	1,971,610	26%
TOTAL ALL FUNDS	\$ 74,202,208	\$ 84,588,270	\$ 10,386,062	14%

Budget Process Timeline FY26

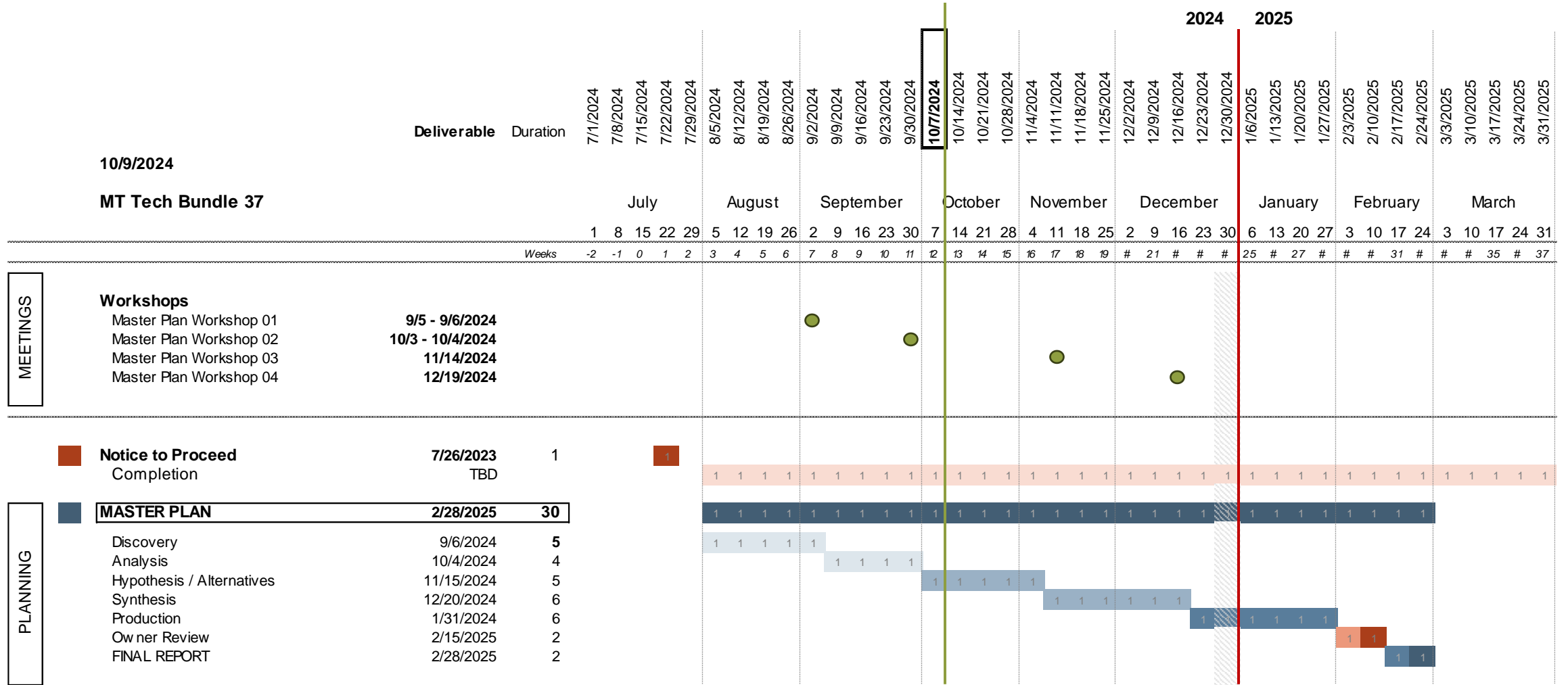




Master Planning Process Update



MASTER PLAN SCHEDULE

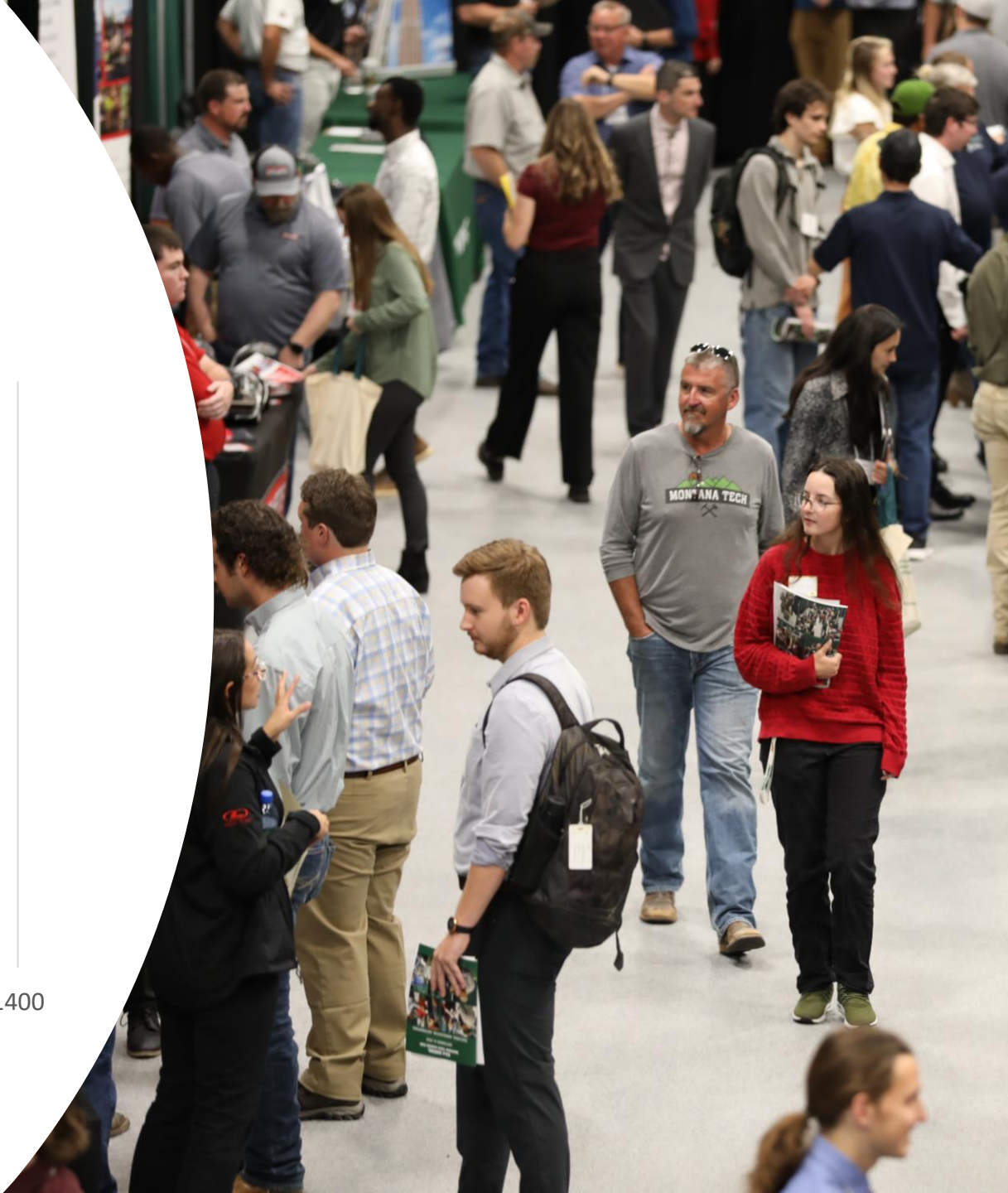
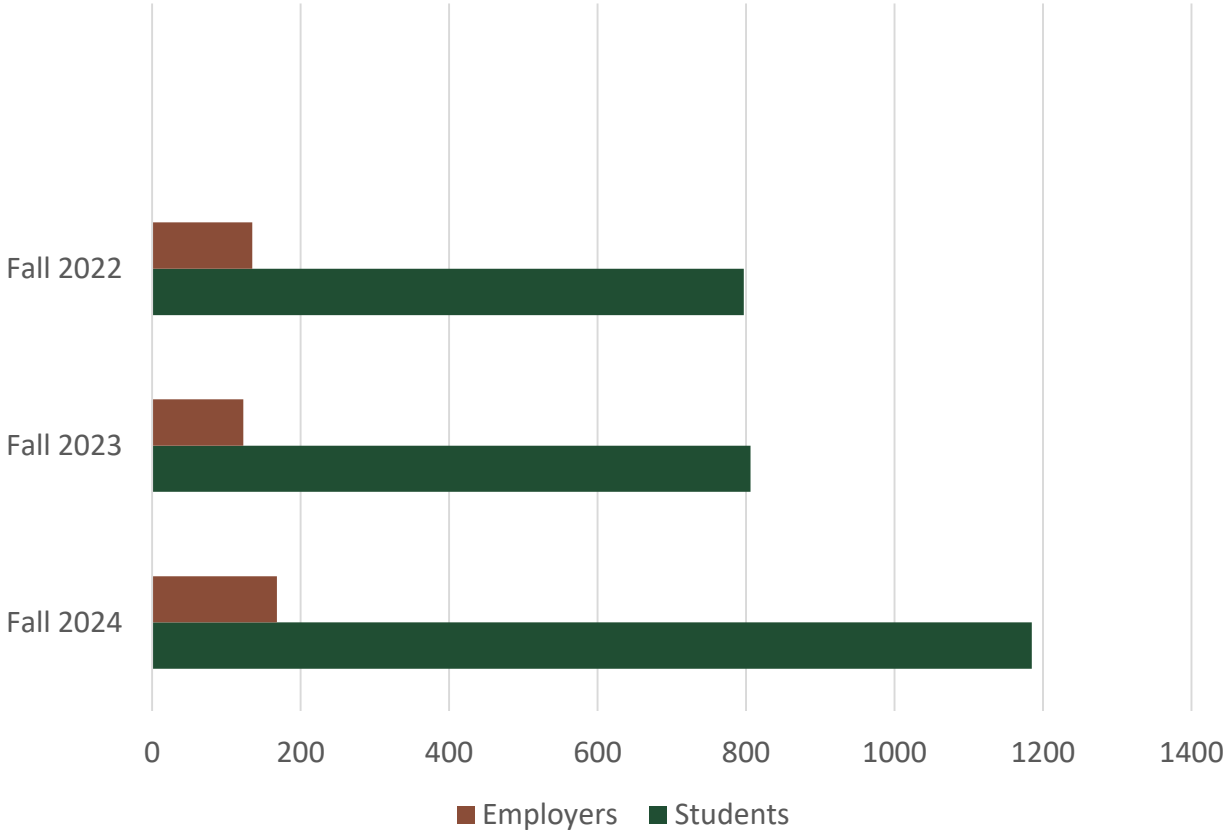




CAREER SERVICES

RECORD-BREAKING CAREER FAIR

CAREER FAIR ATTENDANCE



PARTNER PROGRAM

- Employer Perks
 - Dedicated parking
 - Two tables
 - Front of Career Fair placement

MONTANA
TECHNOLOGICAL UNIVERSITY
Career Services



FUTURE PLANS

Career Fair Future Plans:

- Use student IDs
- Print badges onsite
- Easily moves from employer-student

Career Services Futures Plans:

- More Career Services Staff
 - Increased capacity
 - Active employer outreach
 - Expand partner program
 - Student focused support

MONTANA
TECHNOLOGICAL UNIVERSITY
Career Services

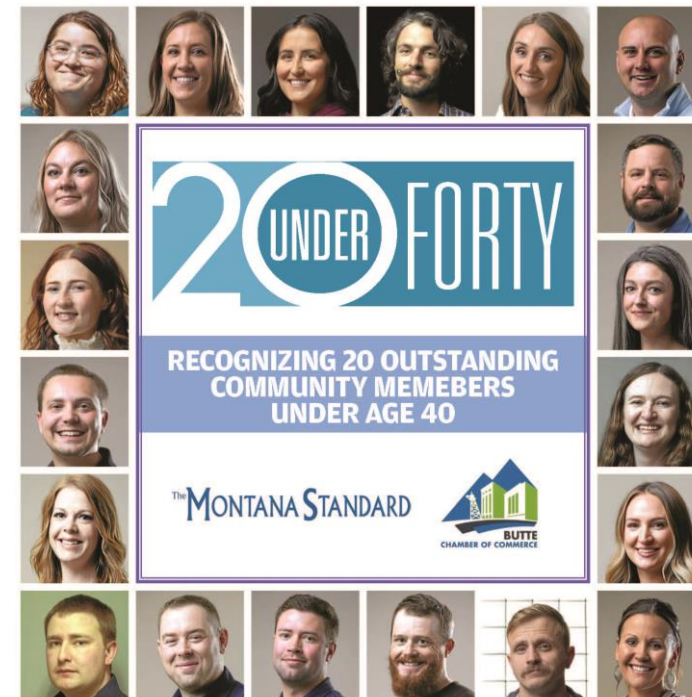


CELEBRATING SUCCESS

- \$6.5 million DPA grant
- First student Fulbright
- Completion of Phase III of the Steam Tunnel Project
- Planning for renovation of Main & Engineering Halls
- Jerry Schuyler awarded Chancellor's Award of Distinction
- Walk to School Day
- Hosted over 200 attendees at Trades & Technology Day
- Celebrated Homecoming and Family Weekend



Congratulations to Sarah North Wolfe and Sean Ryan on being named a 20 under 40 awardee, which recognizes 20 outstanding community members under the age of 40.





Congratulations to Dr. Scott Rosenthal on being named a 2024 Montana Tech Distinguished Alumnus

LOOKING AHEAD

- **10/29:** Wellness Fair
- **10/31:** Campus Store Halloween Contest, RHA Blood Drive, and Trick-or-Treat Off the Street in Prospector Hall
- **11/8** Mining Banquet
- **11/15 & 22:** Tech Day
- **11/21-22:** Board of Regents (Bozeman)
- **12/3:** Giving Tuesday
- **12/6:** Campus Winter Stroll
- **12/9:** Late Night Breakfast for Students
- **12/13:** Line Rodeo, Order of the Engineering, & Commencement Reception
- **12/14:** Nurse Pinning & Commencement
- **12/17:** Holiday Brunch
- **12/19:** Holiday Party



SEARCH UPDATES

MONTANA
TECHNOLOGICAL UNIVERSITY

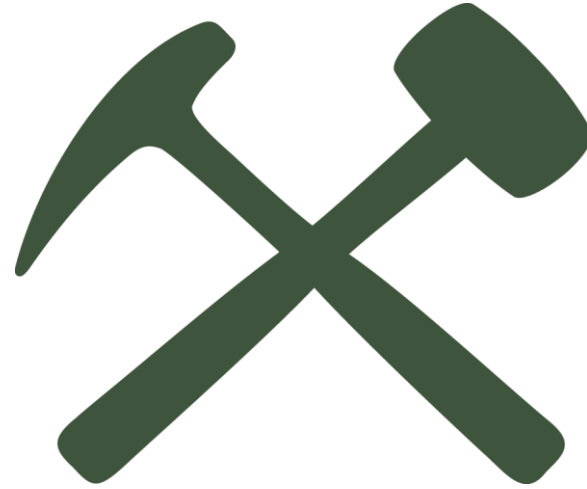
HIGHLANDS COLLEGE
OF MONTANA TECH



Chancellor



Highlands College Dean



THANK YOU!

MONTANA
TECHNOLOGICAL UNIVERSITY