



# Haile Gold Mine Design to Operation

CONSISTENTLY DELIVERING ON COMMITMENTS  
INNOVATION | PERFORMANCE | GROWTH



# Cautionary and Technical Statements

## **Cautionary Notes - Information Purposes Only**

The information contained in this presentation is provided by OceanaGold Corporation ("OGC") for informational purposes only and does not constitute an offer to issue or arrange to issue, or the solicitation of an offer to issue, securities of OGC or other financial products. The information contained herein is not investment or financial product advice and has been prepared without taking into account the investment objectives, financial situation or particular needs of any particular person. The views, opinions and advice provided in this presentation reflect those of the individual presenters only. No representation or warranty, express or implied, is made as to the fairness, accuracy, completeness or correctness of the information, opinions and conclusion contained in this presentation. To the maximum extent permitted by law, none of OGC or any of its directors, officers, employees or agents accepts any liability, including, without limitation, any liability arising out of fault or negligence, for any loss arising from the use of the information contained in this presentation. Furthermore, this presentation does not constitute an offer of shares for sale in the United States or to any person that is, or is acting for the account or benefit of, any U.S. person (as defined in Regulation S under the United States Securities Act of 1933, as amended (the "Securities Act")) ("U.S. Person"), or in any other jurisdiction in which such an offer would be illegal. OGC's shares have not been and will not be registered under the Securities Act.

## **Cautionary Statement Concerning Forward Looking Information**

Certain information contained in this presentation may be deemed "forward-looking" within the meaning of applicable securities laws. Forward-looking statements and information relate to future performance and reflect OGC's expectations regarding the generation of free cash flow, execution of business strategy, future growth, future production, estimated costs, results of operations, business prospects and opportunities of OGC and its related subsidiaries. Any statements that express or involve discussions with respect to predictions, expectations, beliefs, plans, projections, objectives, assumptions or future events or performance (often, but not always, using words or phrases such as "expects" or "does not expect", "is expected", "anticipates" or "does not anticipate", "plans", "estimates" or "intends", or stating that certain actions, events or results "may", "could", "would", "might" or "will" be taken, occur or be achieved) are not statements of historical fact and may be forward-looking statements. Forward-looking statements are subject to a variety of risks and uncertainties which could cause actual events or results to differ materially from those expressed in the forward-looking statements and information. They include, among others, the accuracy of mineral reserve and resource estimates and related assumptions, inherent operating risks, and those risk factors identified in OGC's most recent annual information forms prepared and filed with securities regulators which are available on SEDAR at [www.sedar.com](http://www.sedar.com) under OGC's name.

There are no assurances OGC can fulfil forward-looking statements and information. Such forward-looking statements and information are only predictions based on current information available to management of OGC as of the date that such predictions are made; actual events or results may differ materially as a result of risks facing OGC, some of which are beyond OGC's control. Although OGC believes that any forward-looking statements and information contained in this presentation are based on reasonable assumptions, readers cannot be assured that actual outcomes or results will be consistent with such statements. Accordingly, readers should not place undue reliance on forward-looking statements and information. OGC expressly disclaims any intention or obligation to update or revise any forward-looking statements and information, whether as a result of new information, events or otherwise, except as required by applicable securities laws. The information contained in this release is not investment or financial product advice.

## **Technical Disclosure**

For further scientific and technical information (including disclosure regarding mineral resources and mineral reserves) relating the Macraes Operation, the Didipio Operation, the Waihi Gold Operation and the Haile Gold Mine Project, please refer to the NI 43-101 compliant technical reports available at [sedar.com](http://sedar.com) under the Company's name. For further scientific and technical information (including disclosure regarding mineral resources and mineral reserves) relating to the El Dorado property, please refer to the reports publicly available on SEDAR ([www.sedar.com](http://www.sedar.com)) prepared for Pacific Rim Mining Corp.

## **General Presentation Notes**

All AISC and cash costs are net of by-product credits unless otherwise stated

All financials are denominated in US Dollars unless otherwise stated

# “Son, Things Change.”



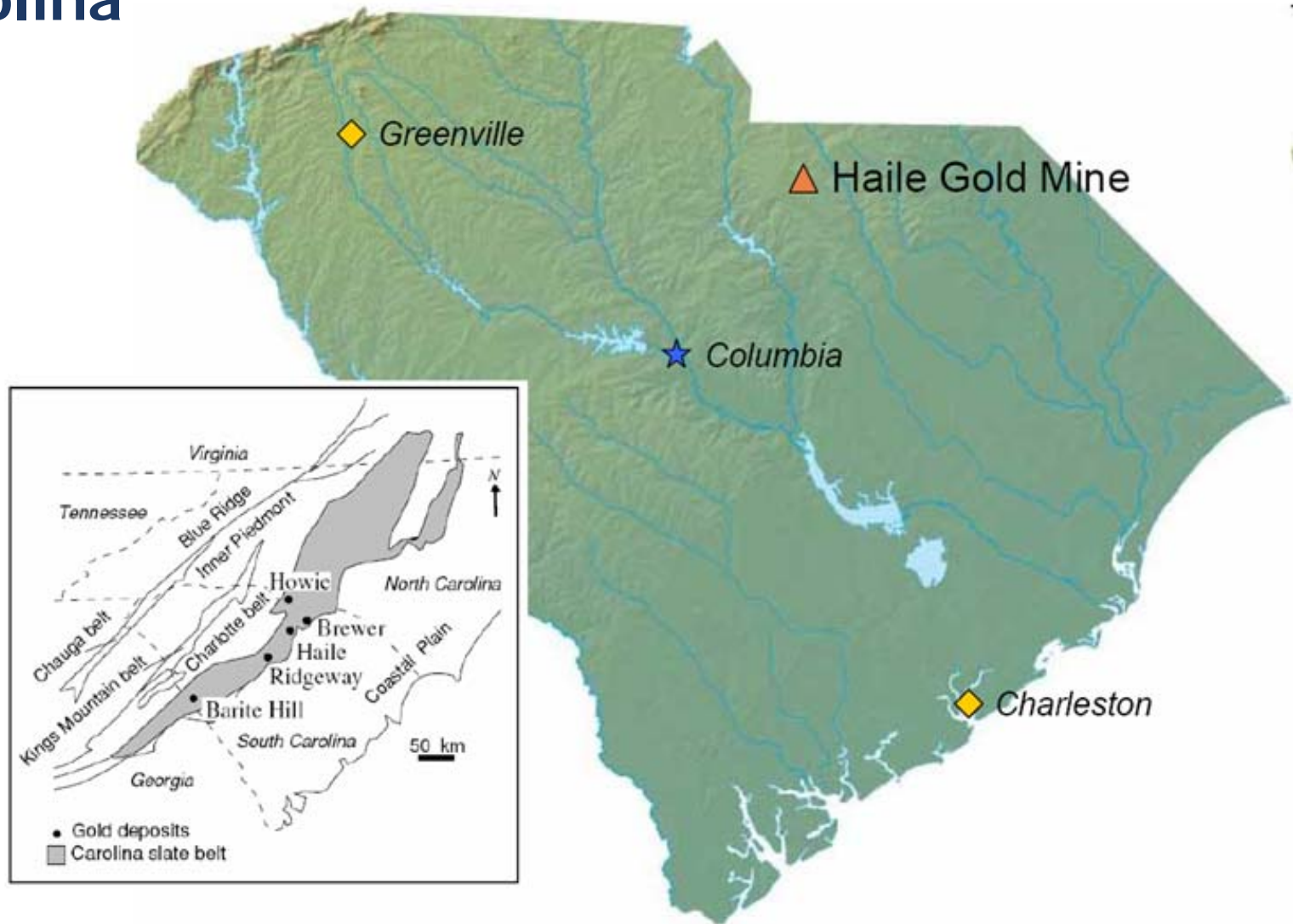
## Rich History



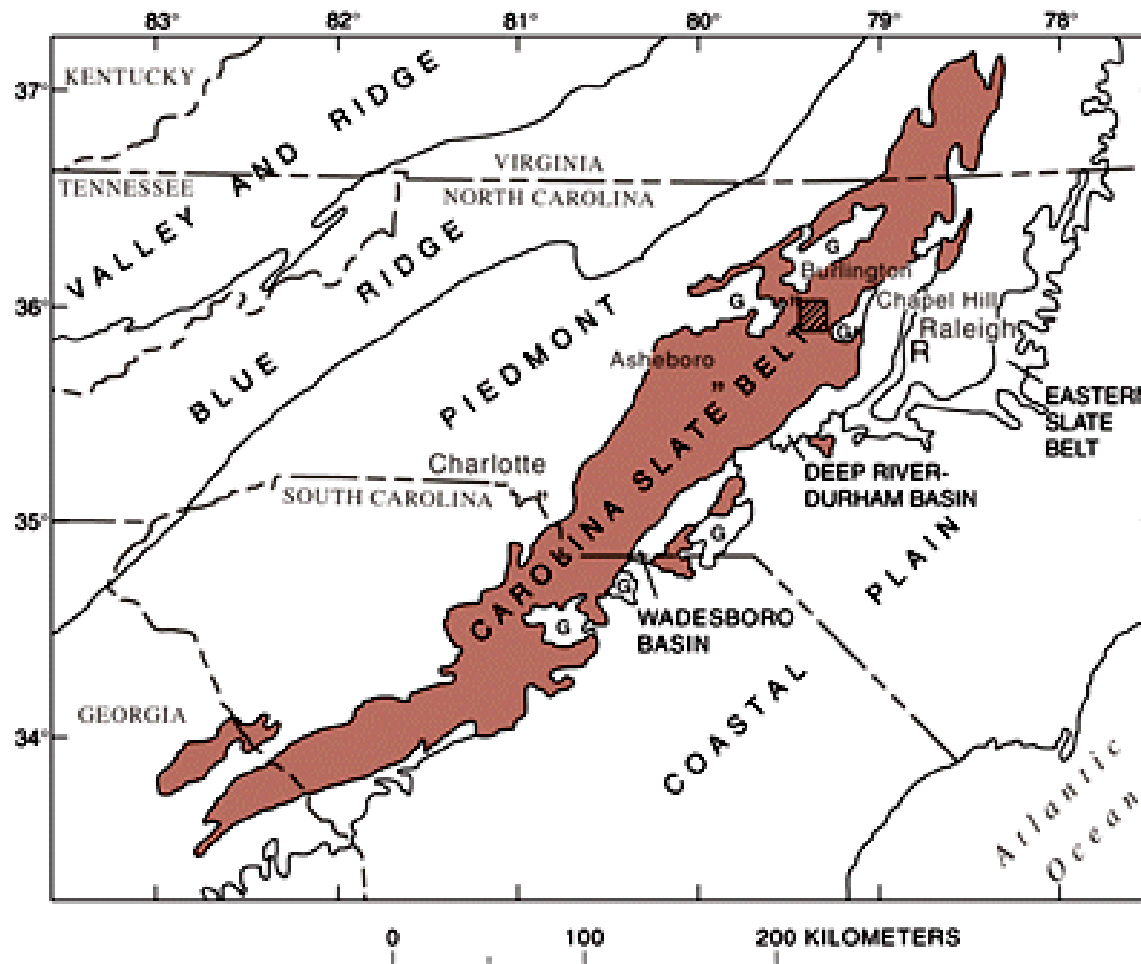
## “Gold in South Carolina?”

- **First discovered by Colonel Benjamin Haile**

# South Carolina

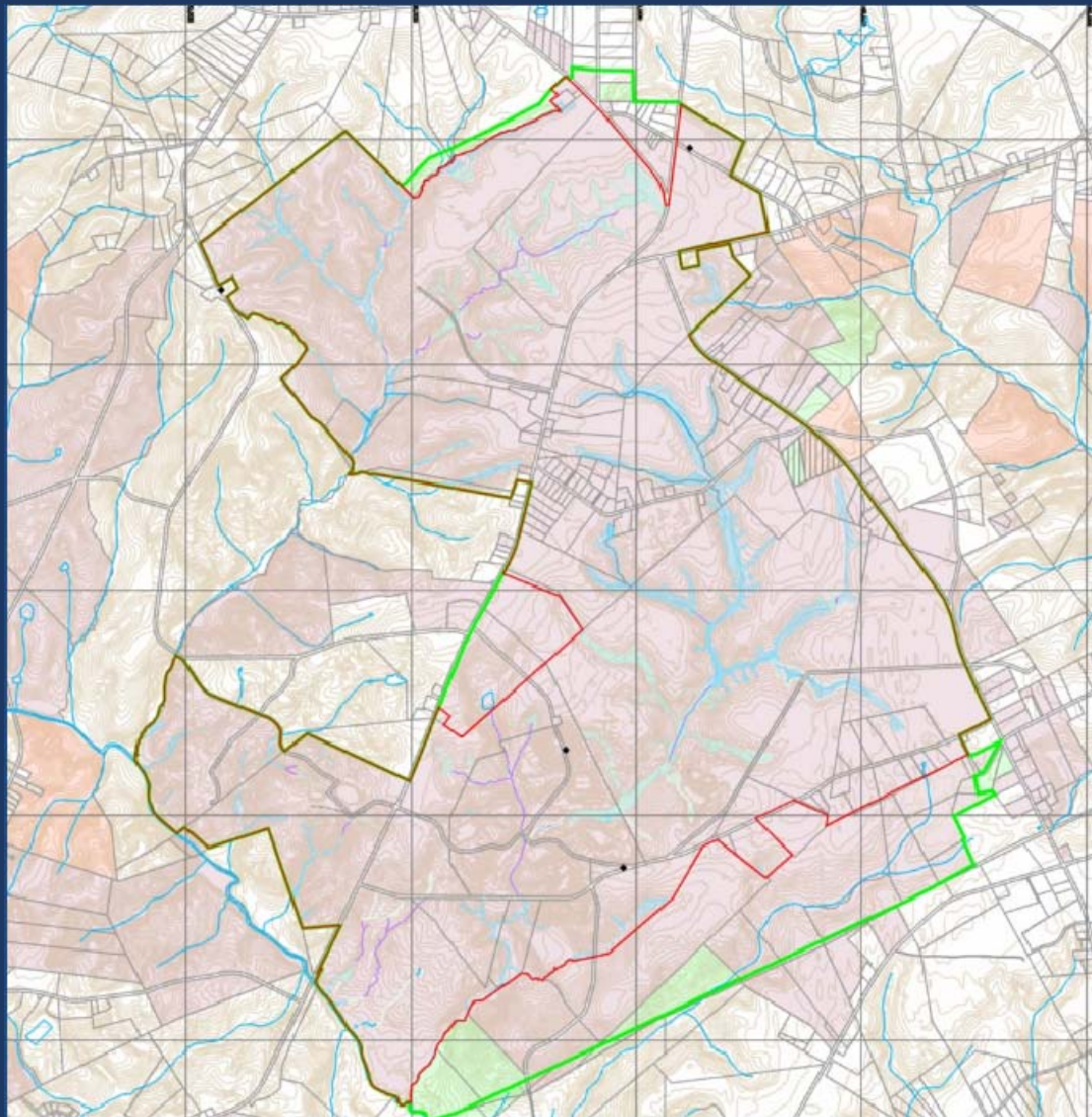


# Carolina Slate Belt



# Haile Property

City of  
Kershaw



4,552 acres

Fee Simple

# Little Lynches Creek

**Thomas Pinckney** – SC Governor

↓ *5,000 acres*

**John Marshal** (1787)

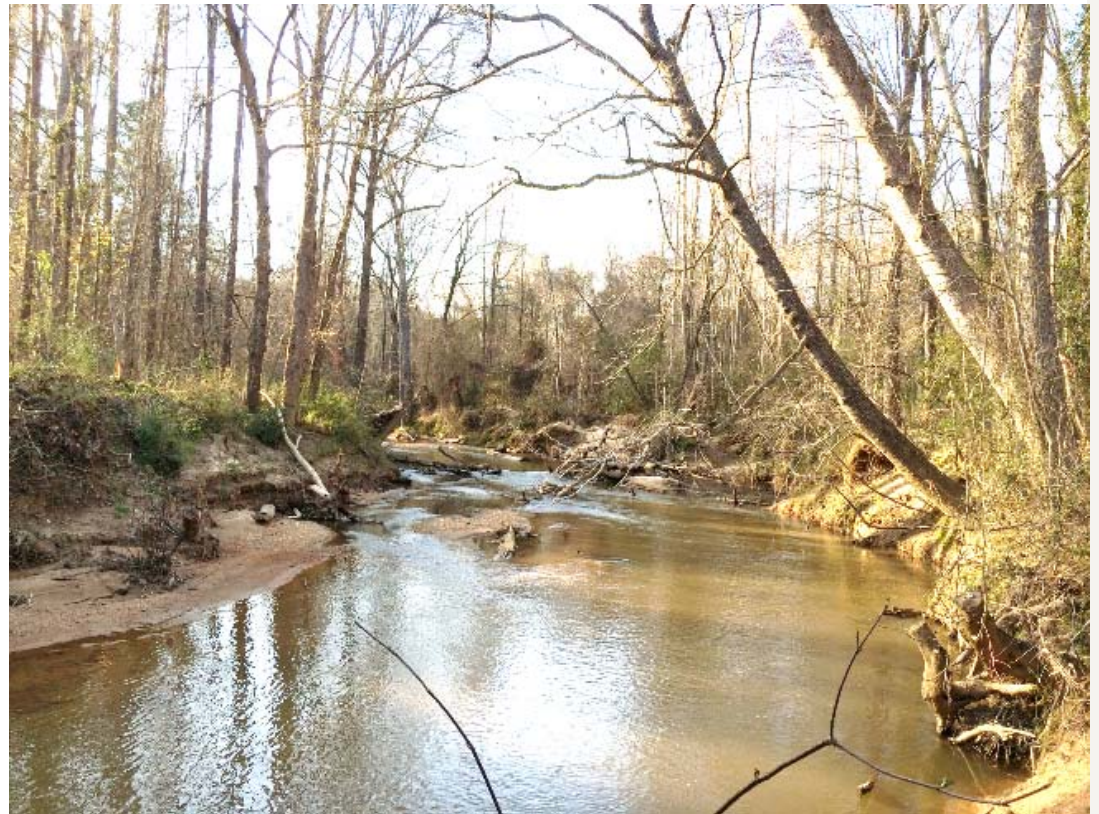


**William Welch** (1792)



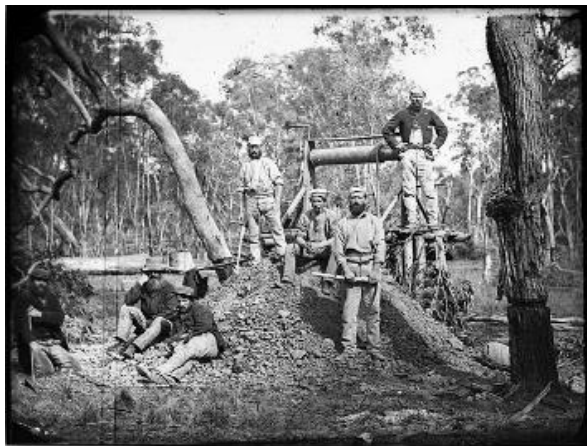
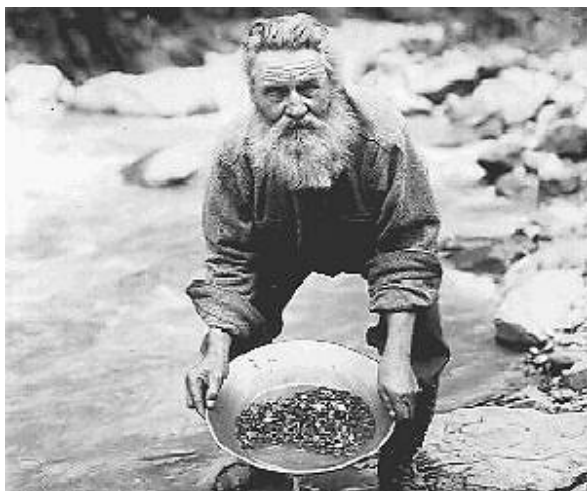
**Benjamin Haile** (1818)

*\$3,000 (Inflated to 2019 \$)*





# Placer Mining



“Placer” Mining – Panning Circa. 1827

# Arrastras and Pick Axe



# Stamp Mill



**First properties to employ stamp mills**

**Steam driven**

**No protection**

**Extremely dangerous**

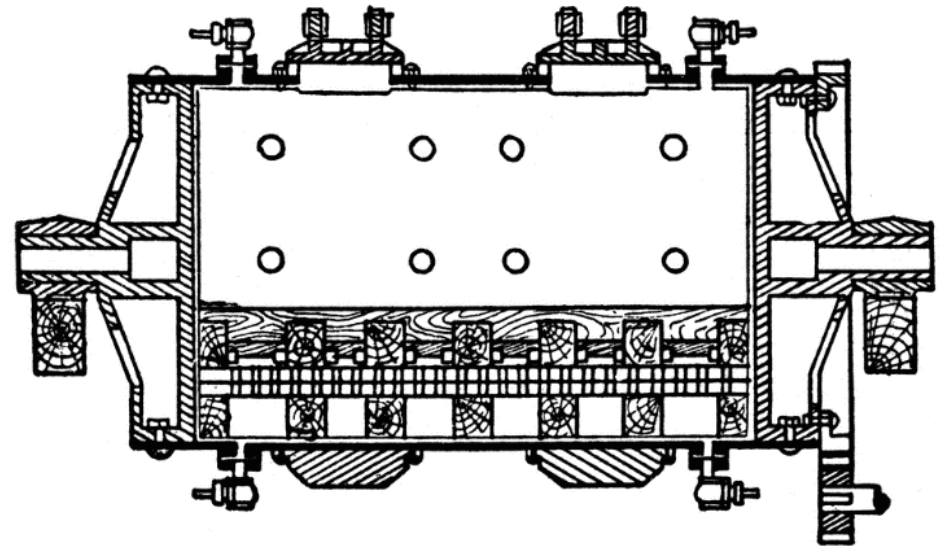
# Dr. and Mrs. Theis



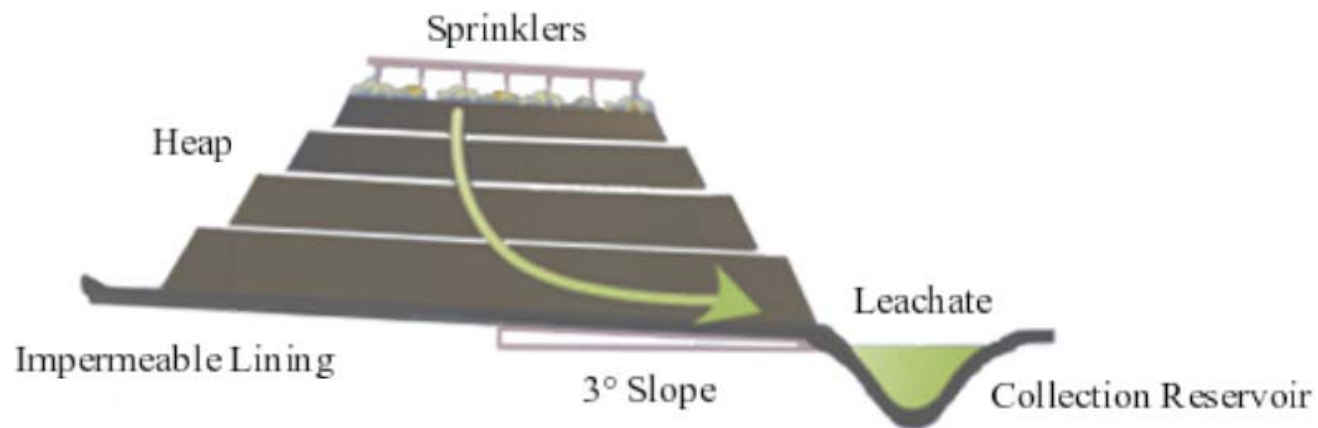
1890s –1900s – Dr. Thies

*(Picture Circa 1904)*

## Barrel Chlorination



# Heap Leaching



Circa 1985

# What's Different?

- 1. Responsible Partners**
- 2. Safety and Environmental Stewardship**
- 3. Concurrent Mining and Reclamation**
- 4. State-of-the-art Process Facility**
  - a) Ultra-Fine Grinding**
  - b) Cyanide Destruct System**
  - c) Lined Contact Water Facilities**
- 5. Proven Closure Methods**

# Responsible Global Partnerships = *OceanaGold*

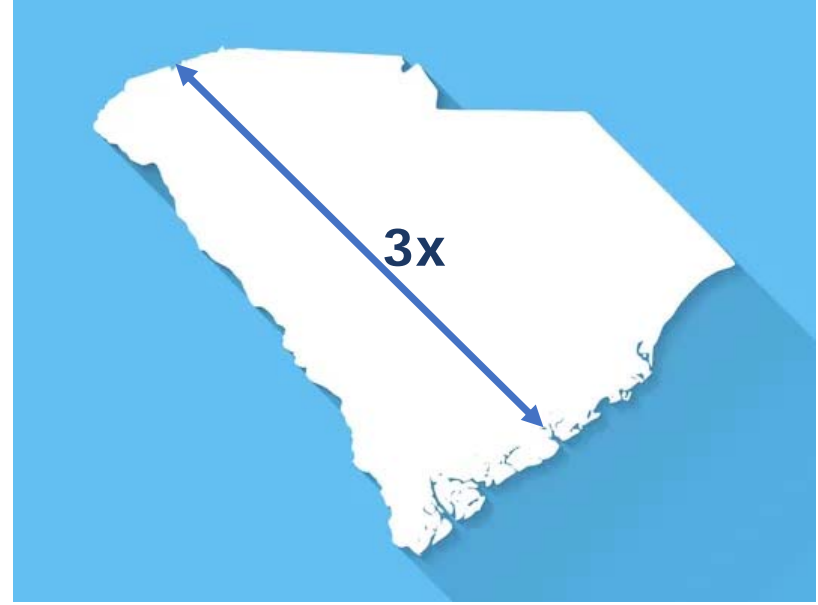


# Comprehensive and Strategic Exploration Program

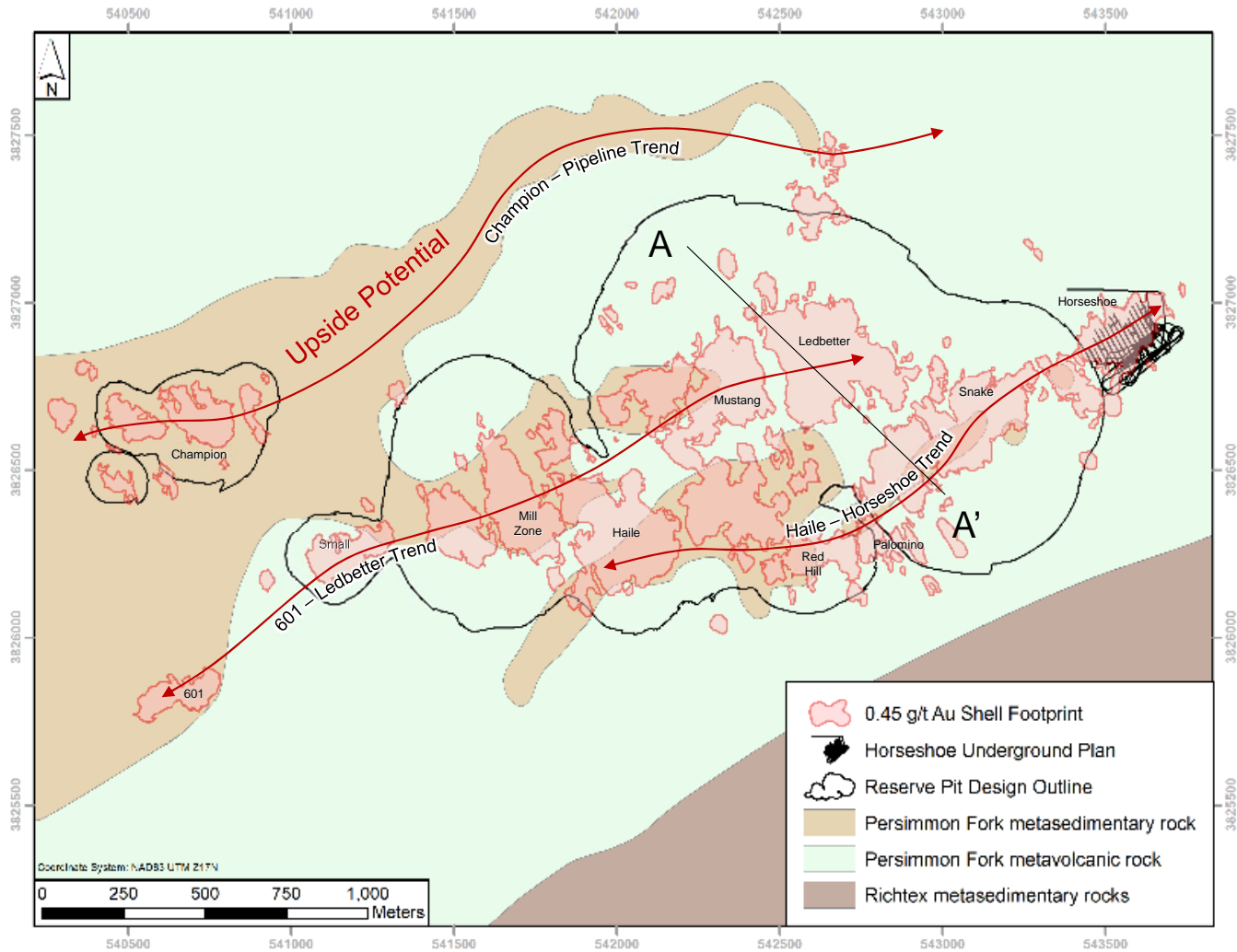




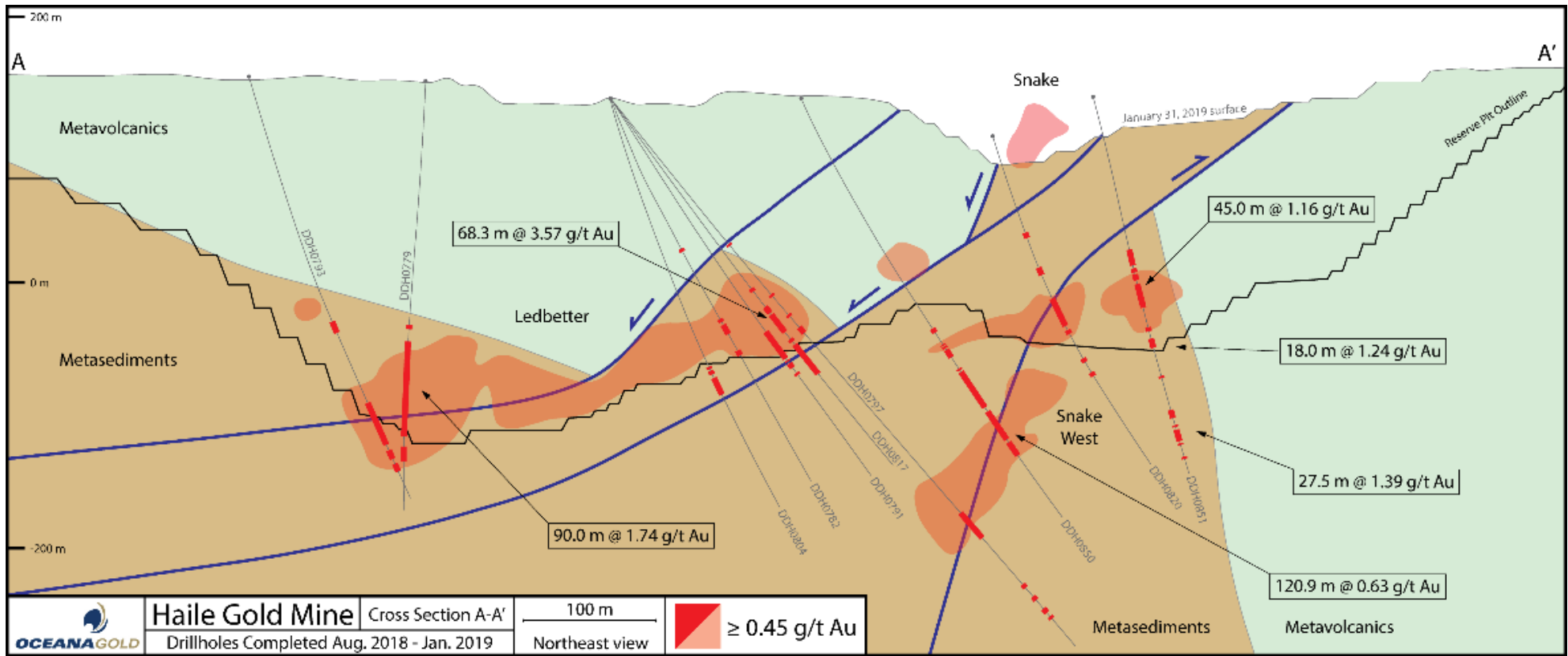
# Miles and Miles of Core



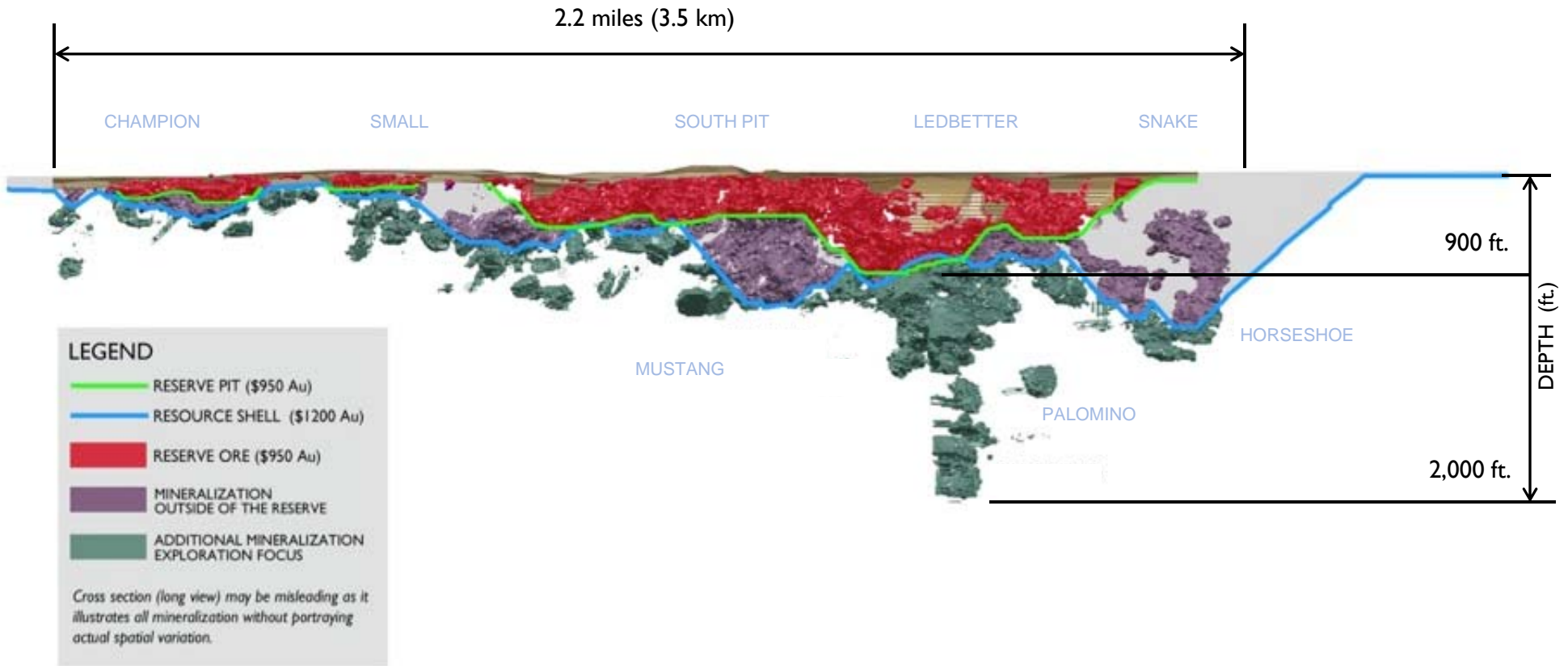
# Haile Mineralized Trends



# Snake West Cross Section



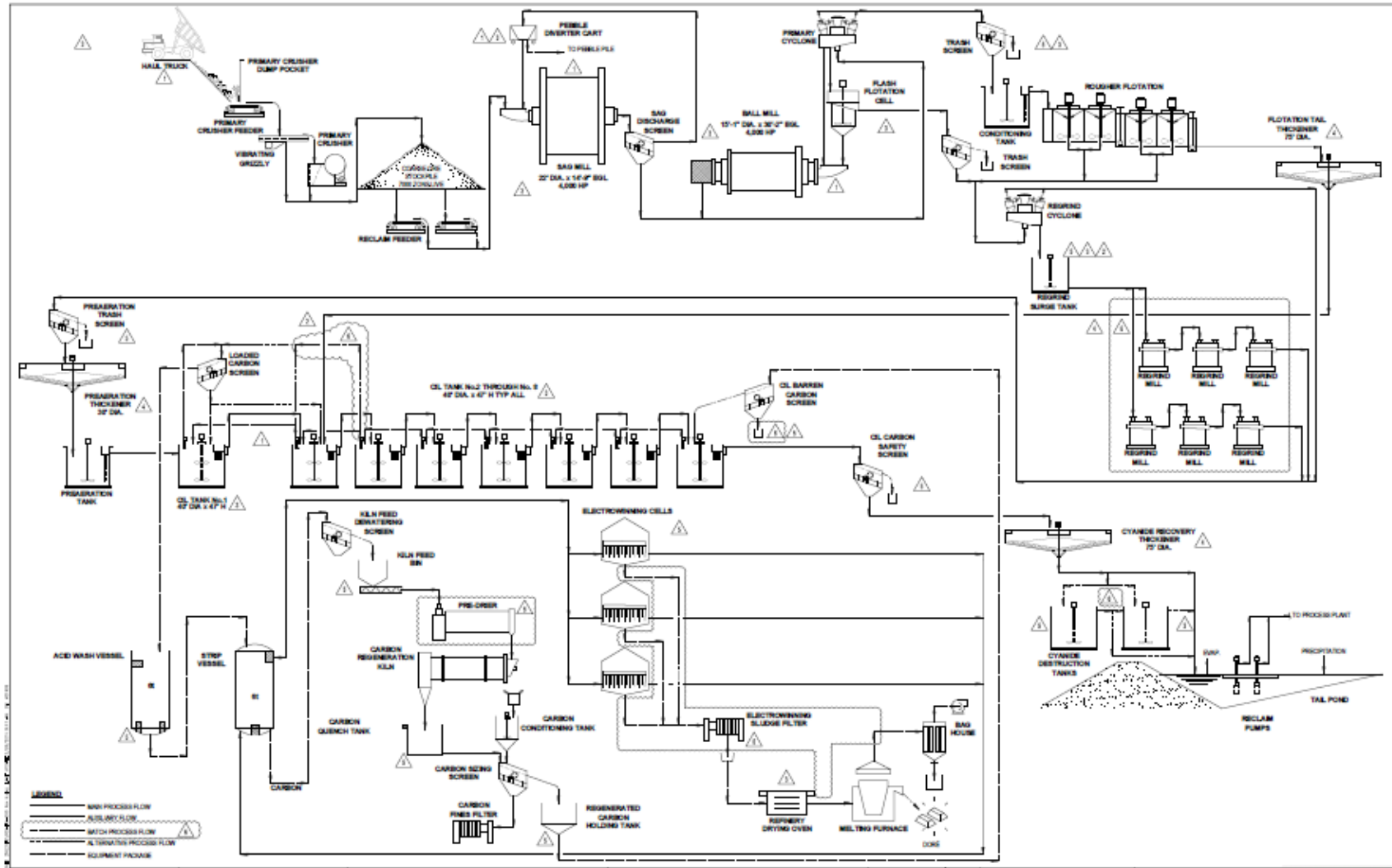
# Mine Plan



# High Tech Mining Equipment



# Process Flowsheet



# Run of Mine (ROM) Pad and Grizzly

- Reduces scheduling conflicts with mine
- More flexibility for mine (unconstrained material movement)
- Enhanced blending / more consistent plant feed grade



# Coarse Ore Stockpile/ Surge Bin

- Decoupling of crushing operations from milling
- Crushing and Milling can run when each are down/up

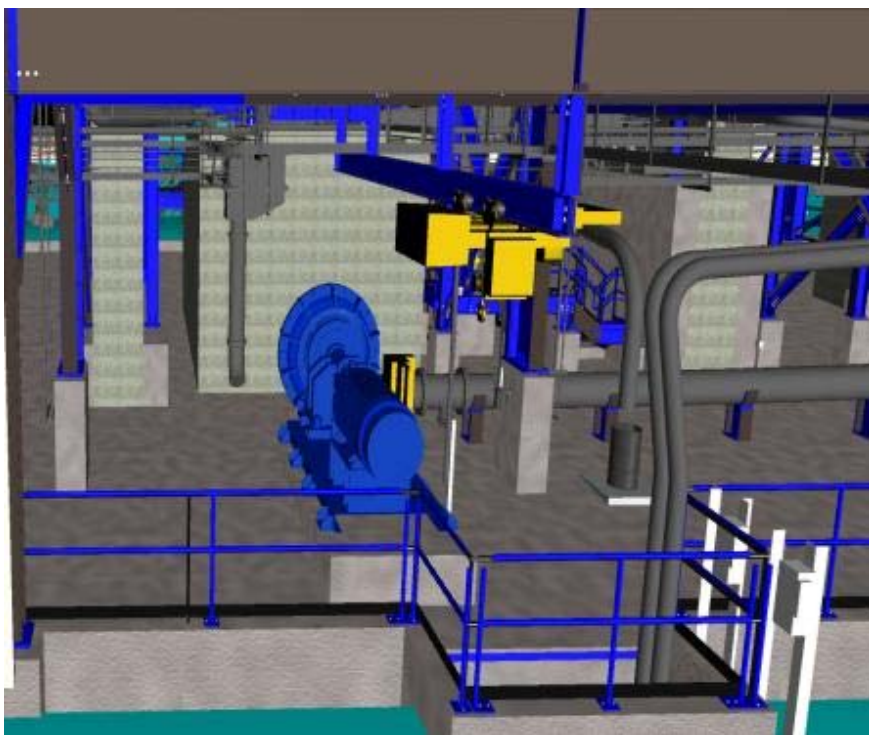




# Primary Cyclone Feed Pump

## Initial Design

- Single installed primary cyclone feed pump



## Design Modification

- Standby primary cyclone feed pump



# Flash Float Upgrade

- Larger unit for increased throughput
- Improved Grinding Circuit operation and maintainability
- Industry proven cell design



# Tailings Treatment



- 100% Cyanide Destruct
- INCO Process

# Tailings Storage Facility (TSF)



# Project Time Line

	2011		2012		2013		2014		2015		2016		2017		2018		2019		
	1H	2H	1H	2H	1H	2H	1H	2H	1H	2H	1H	2H	1H	2H	1H	2H	1H	2H	
Feasibility	█	█																	
Permitting	█	█	█	█	█	█	█	█											
Construction									█	█	█	█	█						
Commissioning													█	█					
Operation														█	█	█	█	█	

# 2018 Results



		Actual	Guidance
Mill Feed	Kt	349	370
Avg. Gold Grade	g/t	2.44	2.12
Utilization	%	86	85
Total Recovery	%	75.6	71.4
Gold Produced	Troy oz	131,819	125,000

## But to Get That?

Overhead \$ 144,000,000

Land \$ 111,000,000

Permitting \$ 55,000,000

Bonding \$ 65,000,000

Construction \$ 385,000,000

**\$ 760,000,000**

# Team Work



*405 HGM employees*

*84% Local*

*28% Diversity (minorities and women)*



# Team Work



# Building World Class



# Vision with Confidence and Courage to Change



*Diane Garrett – Romarco*



*Mark Cadzow and Mick Wilkes – OceanaGold*

# Summary

- “Rich History”
- “Things Change!”
- “Same Location – Different Result”
- “It Takes Active Partners”
- “Continuous Improvement”
- “Teamwork”
- “Vision and Courage”



# Questions?



Colonel Anthony Biddle



**Corporate Headquarters**

Level 14, 357 Collins Street  
Melbourne, Victoria, 3000  
Australia  
PO Box 355,  
Flinders Lane Post Office  
Melbourne, Victoria, 3000  
Australia  
T: +61 3 9656 5300  
F: +61 3 9656 5333  
E: [info@oceanagold.com](mailto:info@oceanagold.com)

[oceanagold.com](http://oceanagold.com)

**Americas Corporate Office**

777 Hornby Street Suite 1910  
Vancouver, British Columbia  
V6Z 1S4  
Canada  
E: [info@oceanagold.com](mailto:info@oceanagold.com)